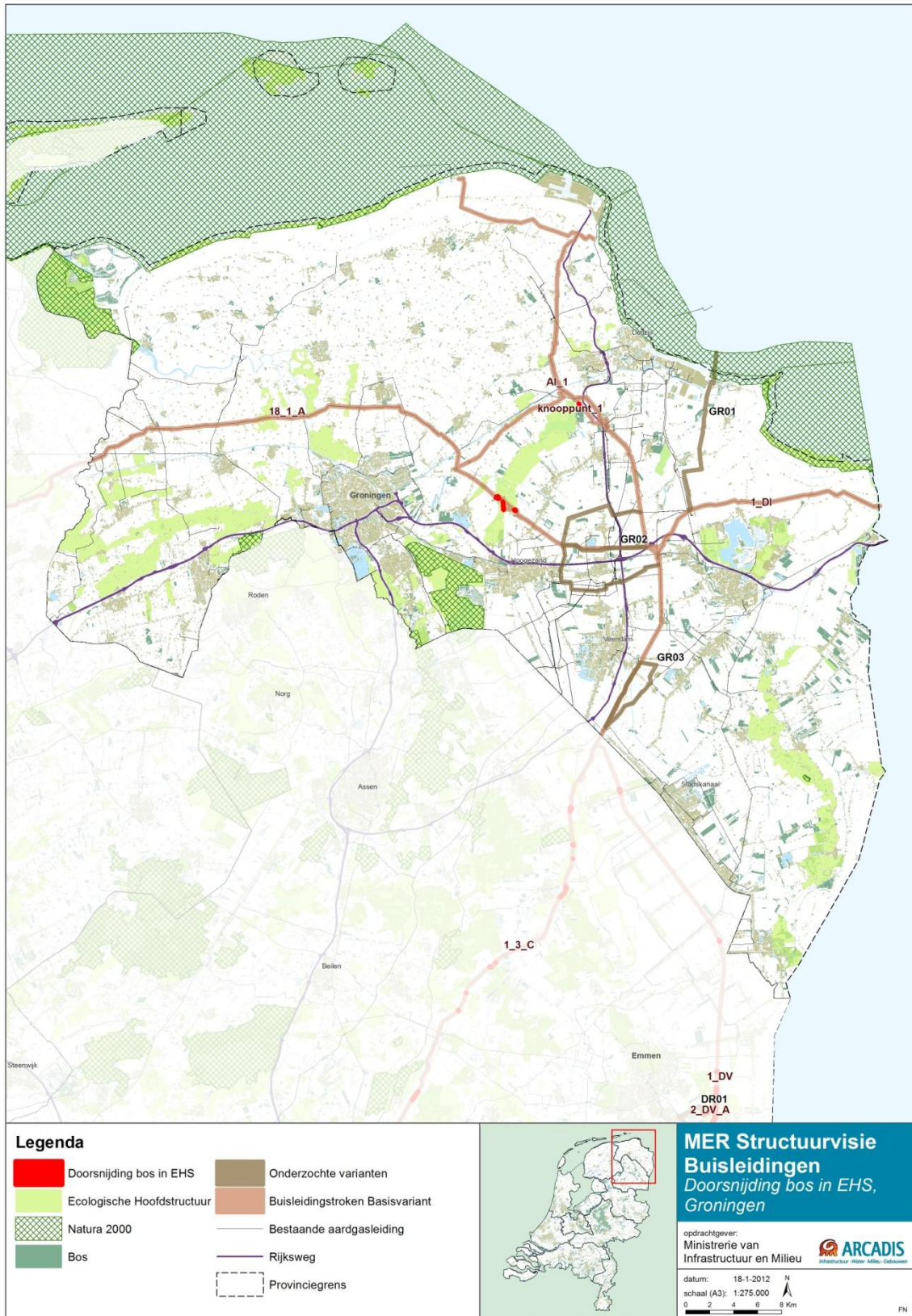


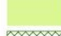





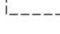


# Bijlage 3 EHS-kaarten per provincie





**Legenda**

- |   |                            |   |                                 |
|---|----------------------------|---|---------------------------------|
|  | Doorsnijding bos in EHS    |  | Onderzochte varianten           |
|  | Ecologische Hoofdstructuur |  | Buisleidingstroken Basisvariant |
|  | Natura 2000                |  | Bestaande aardgasleiding        |
|  | Bos                        |  | Rijksweg                        |
|   |                            |  | Provinciegrens                  |



**MER Structuurvisie  
Buisleidingen**  
*Doorsnijding bos in EHS,  
Friesland*

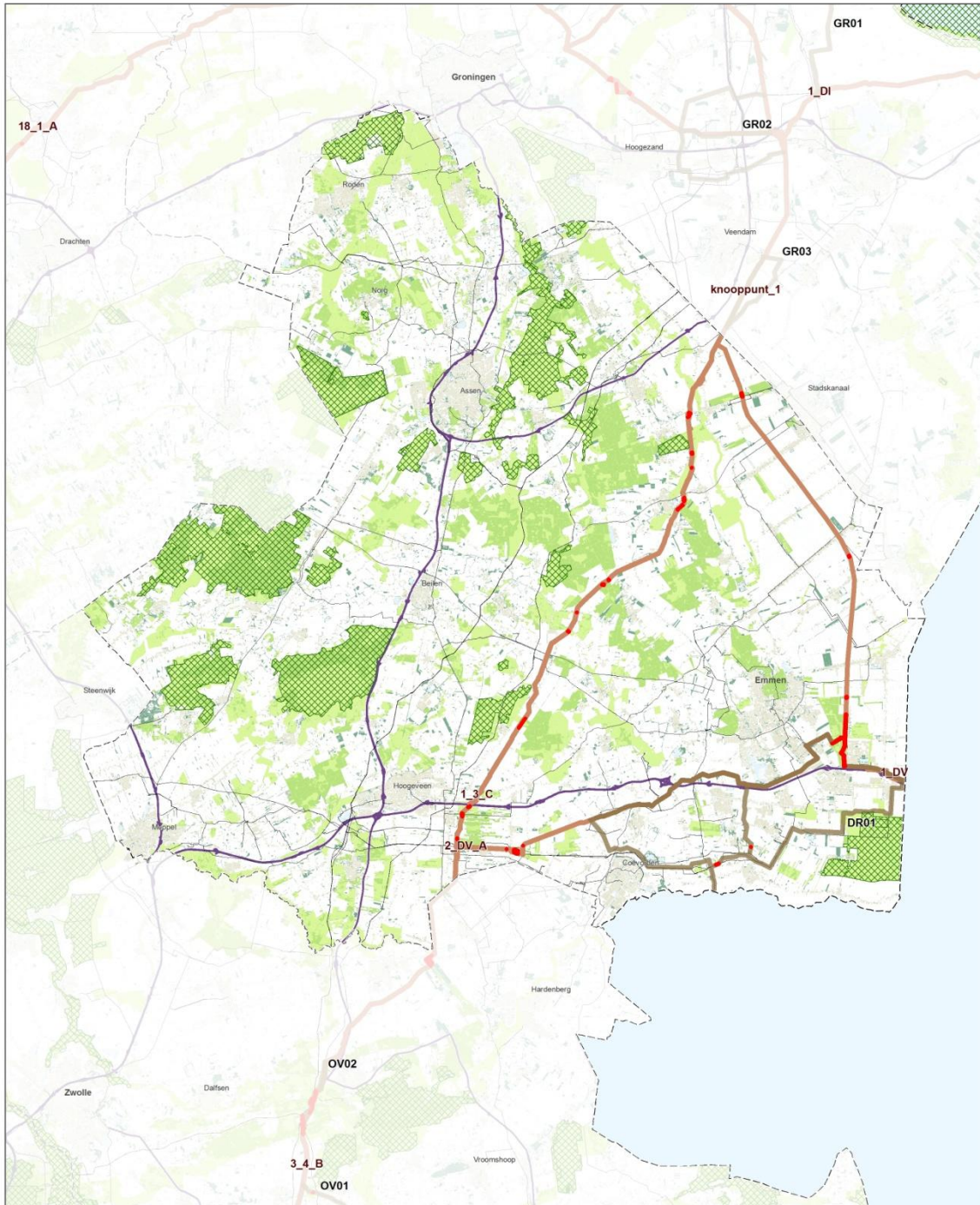
opdrachtgever:  
Ministerie van  
Infrastructuur en Milieu

 **ARCADIS**  
Infrastructuur Water Milieu Gebouwen


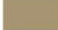







datum: 18-1-2012  
schaal (A3): 1:275.000

 0 2 4 6 8 Km

FN



**Legenda**

- |   |                            |   |                                 |
|---|----------------------------|---|---------------------------------|
|  | Doorsnijding bos in EHS    |  | Onderzochte varianten           |
|  | Natura 2000                |  | Buisleidingstroken Basisvariant |
|  | Ecologische Hoofdstructuur |  | Bestaande aardgasleiding        |
|  | Bos                        |  | Rijksweg                        |
|   |                            |  | Provinciegrens                  |



**MER Structuurvisie  
Buisleidingen**  
*Doorsnijding bos in EHS,  
Drenthe*

opdrachtgever:  
Ministerie van  
Infrastructuur en Milieu

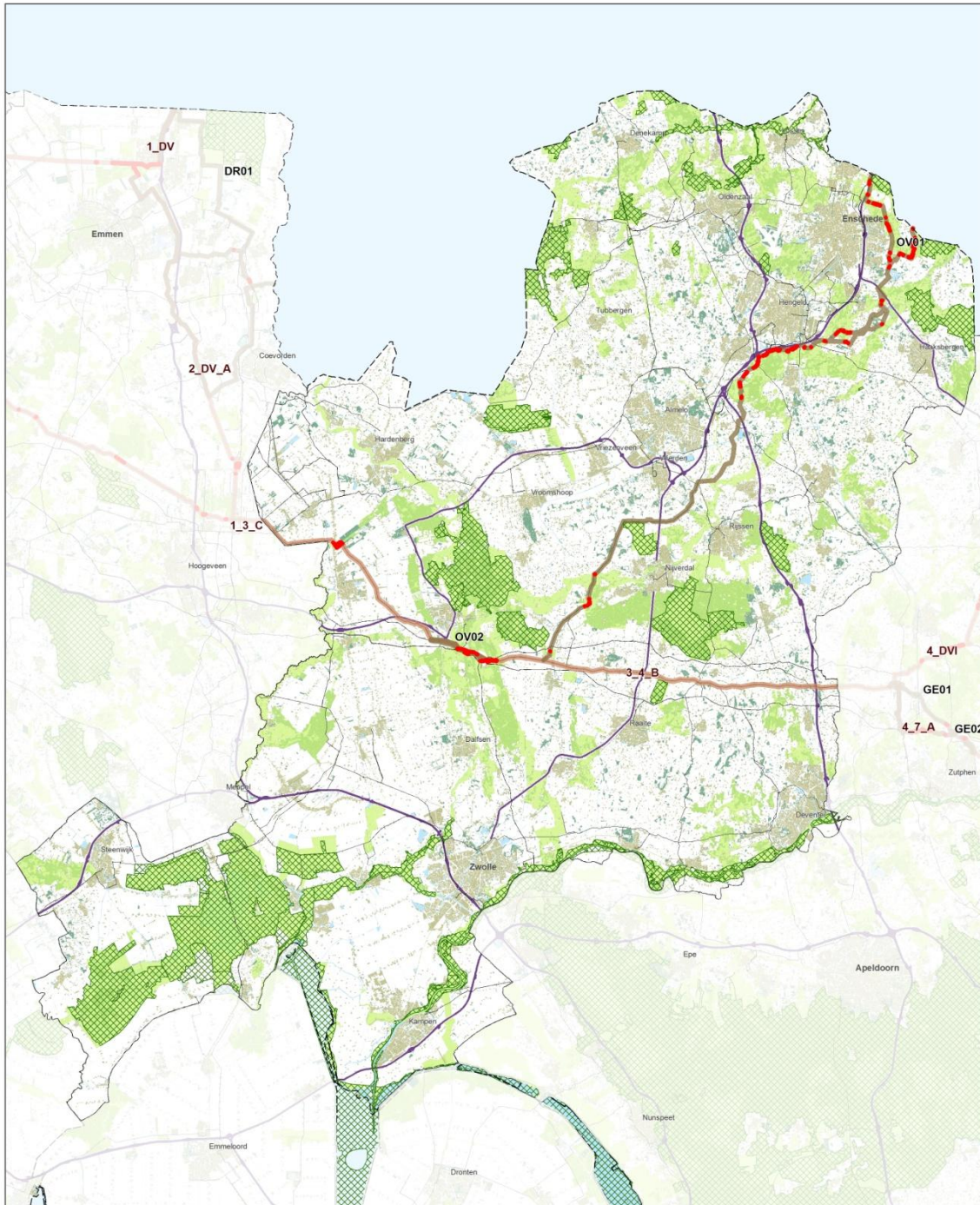
  
Infrastructuur Water Milieu Cebocouren

datum: 18-1-2012



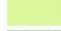






schaal (A3): 1:275 000

0 2 4 6 8 Km

FN



**Legenda**

- |   |                            |   |                                 |
|---|----------------------------|---|---------------------------------|
|  | Doorsnijding bos in EHS    |  | Onderzochte varianten           |
|  | Ecologische Hoofdstructuur |  | Buisleidingstroken Basisvariant |
|  | Natura 2000                |  | Bestaande aardgasleiding        |
|  | Bos                        |  | Rijksweg                        |
|   |                            |  | Provinciegrens                  |

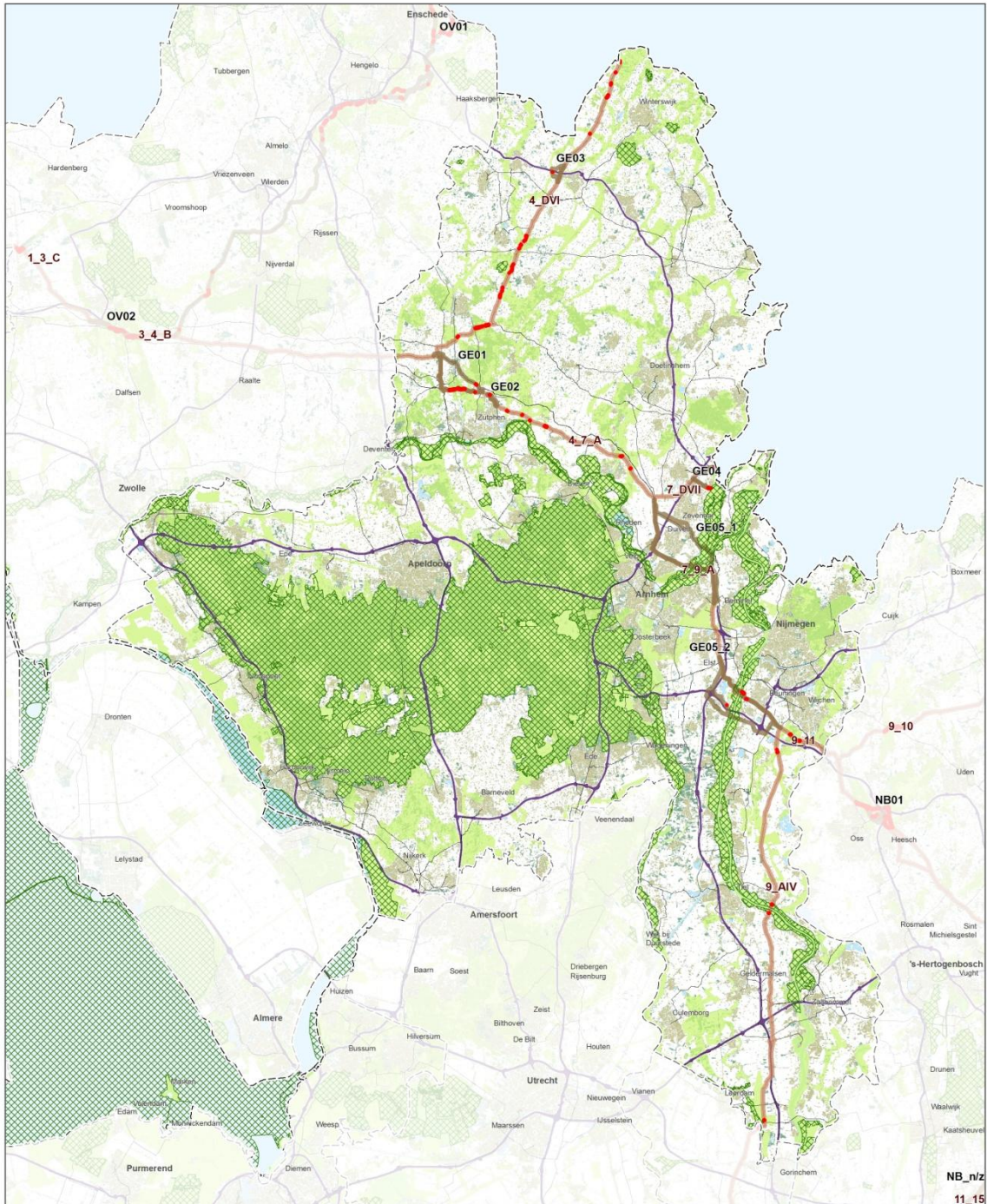


**MER Structuurvisie**  
**Buisleidingen**  
*Doorsnijding bos in EHS, Overijssel*

opdrachtgever:  
 Ministerie van  
 Infrastructuur en Milieu   
 Infrastructuur Water Milieu Gebouwen

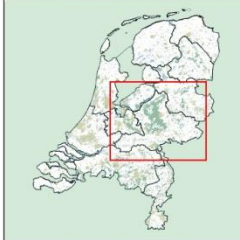
datum: 23-1-2012  
 schaal (A3): 1:300 000   
 0 2 4 6 8 Km

FN



**Legenda**

	Doorsnijding bos in EHS		Onderzochte varianten
	Ecologische Hoofdstructuur		Buisleidingstroken Basisvariant
	Natura 2000		Bestaande aardgasleiding
	Bos		Rijksweg
			Provinciegrens



**MER Structuurvisie**  
**Buisleidingen**  
*Doorsnijding bos in EHS, Gelderland*

opdrachtgever:  
 Ministerie van  
 Infrastructuur en Milieu

**ARCADIS**  
 Infrastructuur Water Milieu Gebouwen



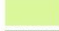






datum: 18-1-2012  
 schaal (A3): 1:400 000

0 2 4 6 8 Km

FN



**Legenda**

- |   |                            |   |                                 |
|---|----------------------------|---|---------------------------------|
|  | Doorsnijding bos in EHS    |  | Onderzochte varianten           |
|  | Ecologische Hoofdstructuur |  | Buisleidingstroken Basisvariant |
|  | Natura 2000                |  | Bestaande aardgasleiding        |
|  | Bos                        |  | Rijksweg                        |
|   |                            |  | Provinciegrens                  |



**MER Structuurvisie  
Buisleidingen**  
*Doorsnijding bos in EHS,  
Noord-Holland*

opdrachtgever:  
Ministerie van  
Infrastructuur en Milieu

  
Infrastructuur Water Milieu Gebouwen



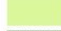






datum: 23-1-2012  
schaal (A3): 1:250 000

 0 2 4 6 8 Km

FN



**Legenda**

- |   |                            |   |                                 |
|---|----------------------------|---|---------------------------------|
|  | Doorsnijding bos in EHS    |  | Onderzochte varianten           |
|  | Ecologische Hoofdstructuur |  | Buisleidingstroken Basisvariant |
|  | Natura 2000                |  | Bestaande aardgasleiding        |
|  | Bos                        |  | Rijksweg                        |
|   |                            |  | Provinciegrens                  |



**MER Structuurvisie  
Buisleidingen**  
*Doorsnijding bos in EHS,  
Zuid-Holland*

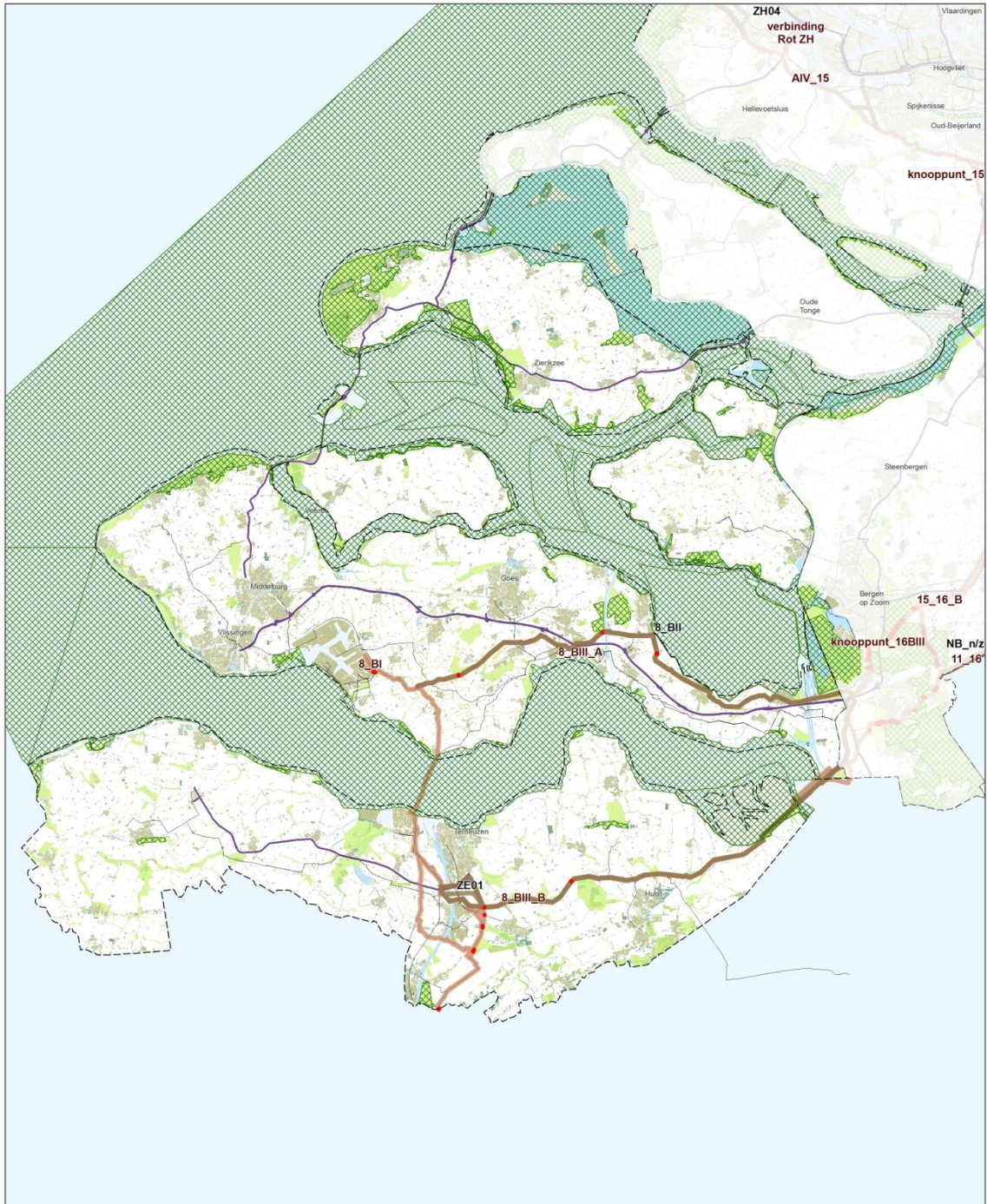
opdrachtgever:  
Ministerie van  
Infrastructuur en Milieu

  
Infrastructuur Water Milieu Gebouwen



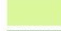






datum: 23-1-2012  
schaal (A3): 1:275 000

 N  
 0 2 4 6 8 Km

FN



**Legenda**

	Doorsnijding bos in EHS		Onderzochte varianten
	Ecologische Hoofdstructuur		Buisleidingstroken Basisvariant
	Natura 2000		Bestaande aardgasleiding
	Bos		Rijksweg
			Provinciegrens



**MER Structuurvisie**  
**Buisleidingen**  
*Doorsnijding bos in EHS, Zeeland*

opdrachtgever:  
 Ministerie van  
 Infrastructuur en Milieu

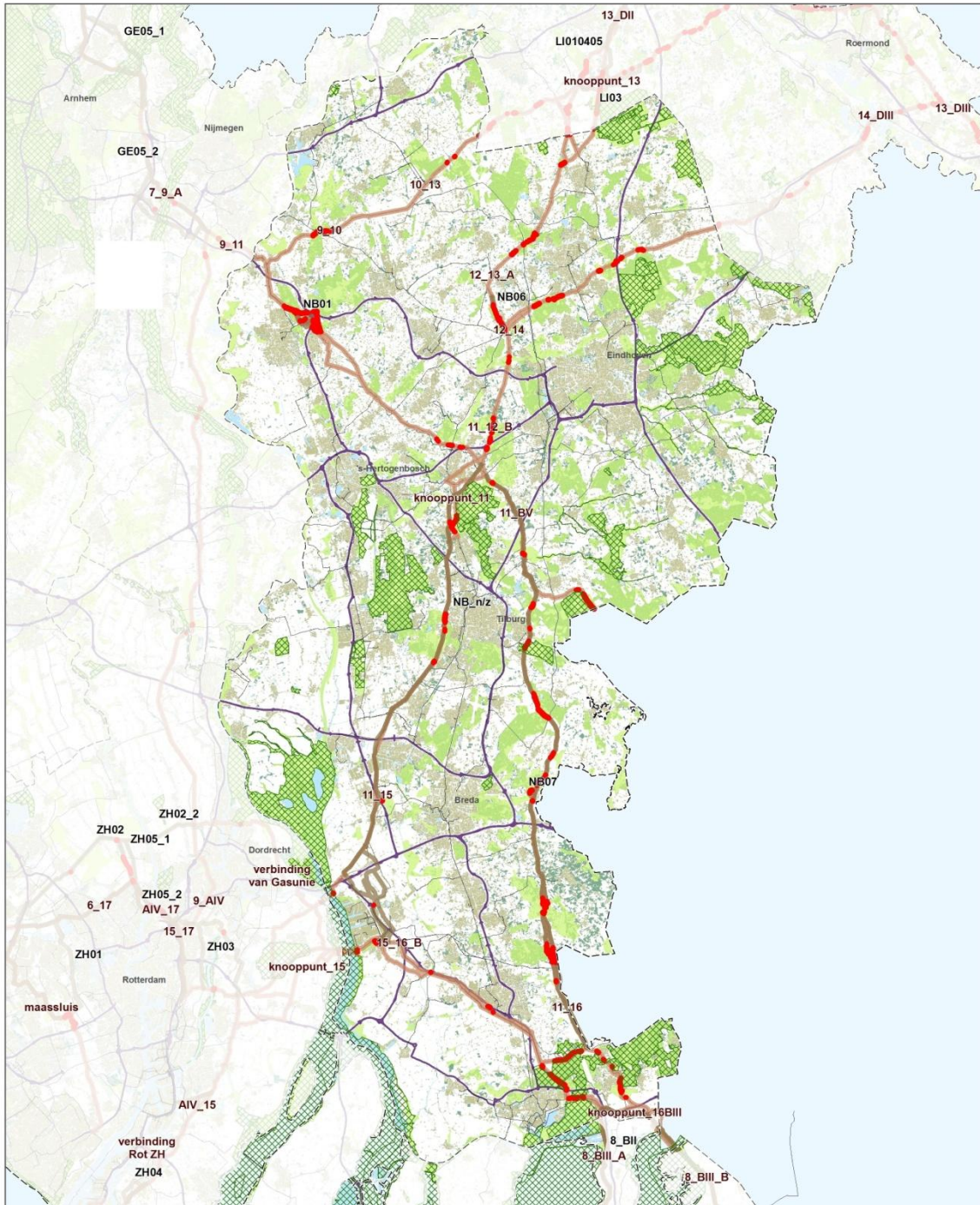
  
 Infrastructuur Water Milieu Cobouw

datum: 23-1-2012  
 schaal (A3): 1:275 000



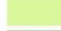






 N  
 0 2 4 6 8 Km

FN





**Legenda**

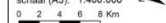
- |   |                            |   |                                 |
|---|----------------------------|---|---------------------------------|
|  | Doorsnijding bos in EHS    |  | Onderzochte varianten           |
|  | Ecologische Hoofdstructuur |  | Buisleidingstroken Basisvariant |
|  | Natura 2000                |  | Bestaande aardgasleiding        |
|  | Bos                        |  | Rijksweg                        |
|   |                            |  | Provinciegrens                  |

**MER Structuurvisie  
Buisleidingen**  
*Doorsnijding bos in EHS,  
Noord-Brabant*

opdrachtgever:  
Ministerie van  
Infrastructuur en Milieu





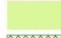






datum: 18-1-2012  
schaal (A3): 1:400 000



FN



**Legenda**

	Doorsnijding bos in EHS		Onderzochte varianten
	Ecologische Hoofdstructuur		Buisleidingstroken Basisvariant
	Natura 2000		Bestaande aardgasleiding
	Bos		Rijksweg
			Provinciegrens



**MER Structuurvisie Buisleidingen**  
*Doorsnijding bos in EHS, Limburg*

opdrachtgever:  
 Ministerie van Infrastructuur en Milieu

 **ARCADIS**  
 Infrastructuur Water Milieu Gebouwen

datum: 18-1-2012  
 schaal (A3): 1:275.000

 0 2 4 6 8 Km

FN