

Haringvliet

Adaptatiestap

2030

2047

2066

beheermaatregelen Natura 2000 ✓

0,45
0,40
0,35
0,30
0,25
0,20
0,15
0,10
0,05
0,00

gemiddelde getijslag (m)

0,4
0,3
0,2
0,1
0,0
-0,1
-0,2
-0,3
-0,4
-0,5
-0,6

zeespiegelstijging t.o.v. NAP (m)

gemiddelde waterstand Grevelingenmeer t.o.v. NAP (m)

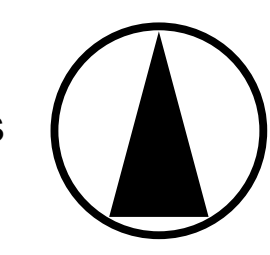
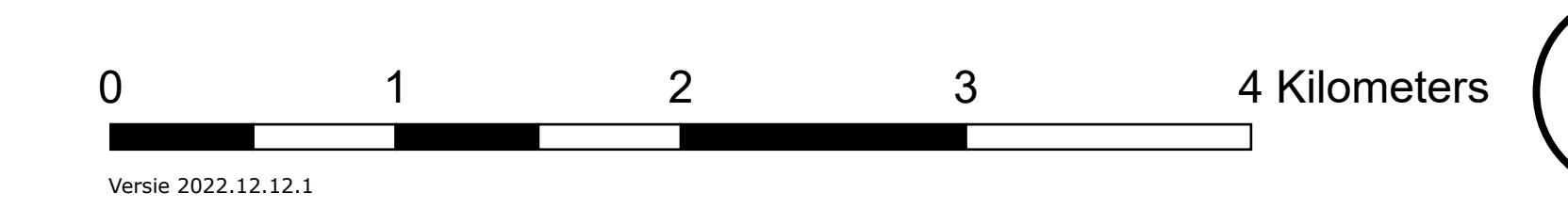
max

min

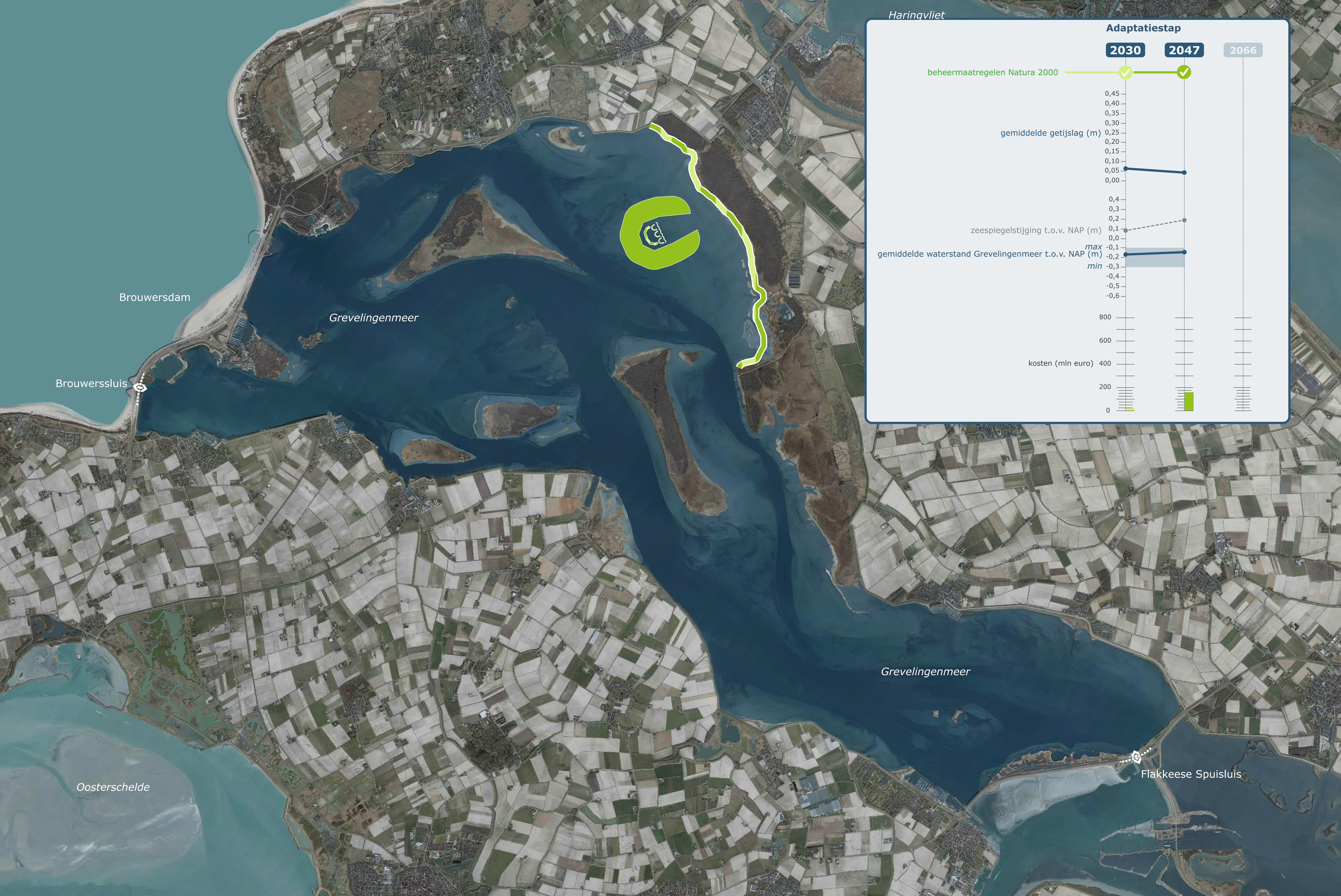
800
600
400
200
0

kosten (mln euro)

A1: Autonome ontwikkeling



Versie 2022.12.12.1



Haringvliet

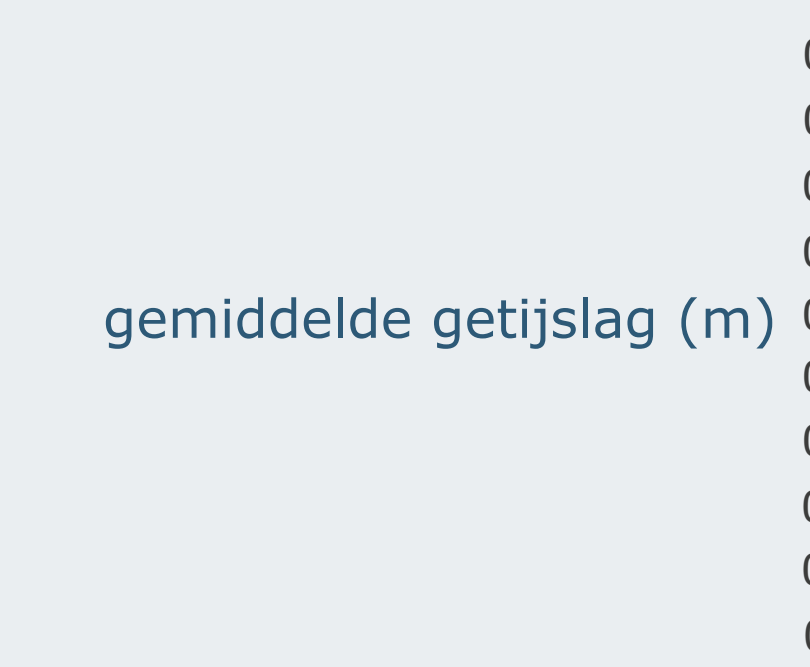
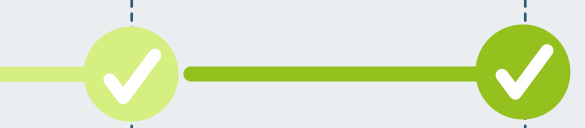
Adaptatiestap

2030

2047

2066

beheermaatregelen Natura 2000



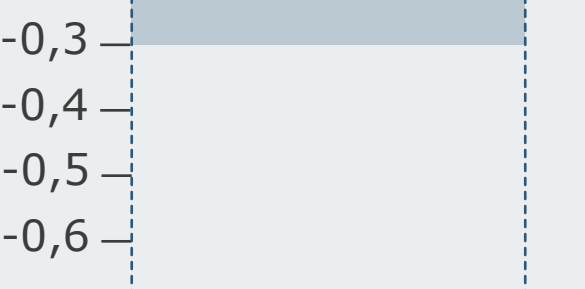
zeespiegelstijging t.o.v. NAP (m)



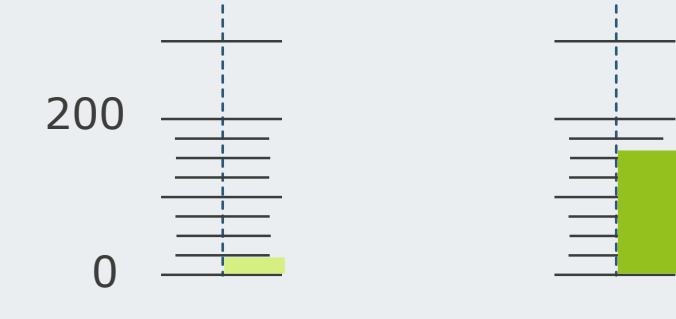
gemiddelde waterstand Grevelingenmeer t.o.v. NAP (m)

max

min



kosten (mln euro)



Brouwersdam

Grevelingenmeer

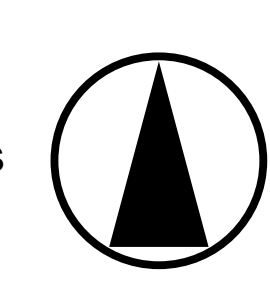
Brouwerssluis

Grevelingenmeer

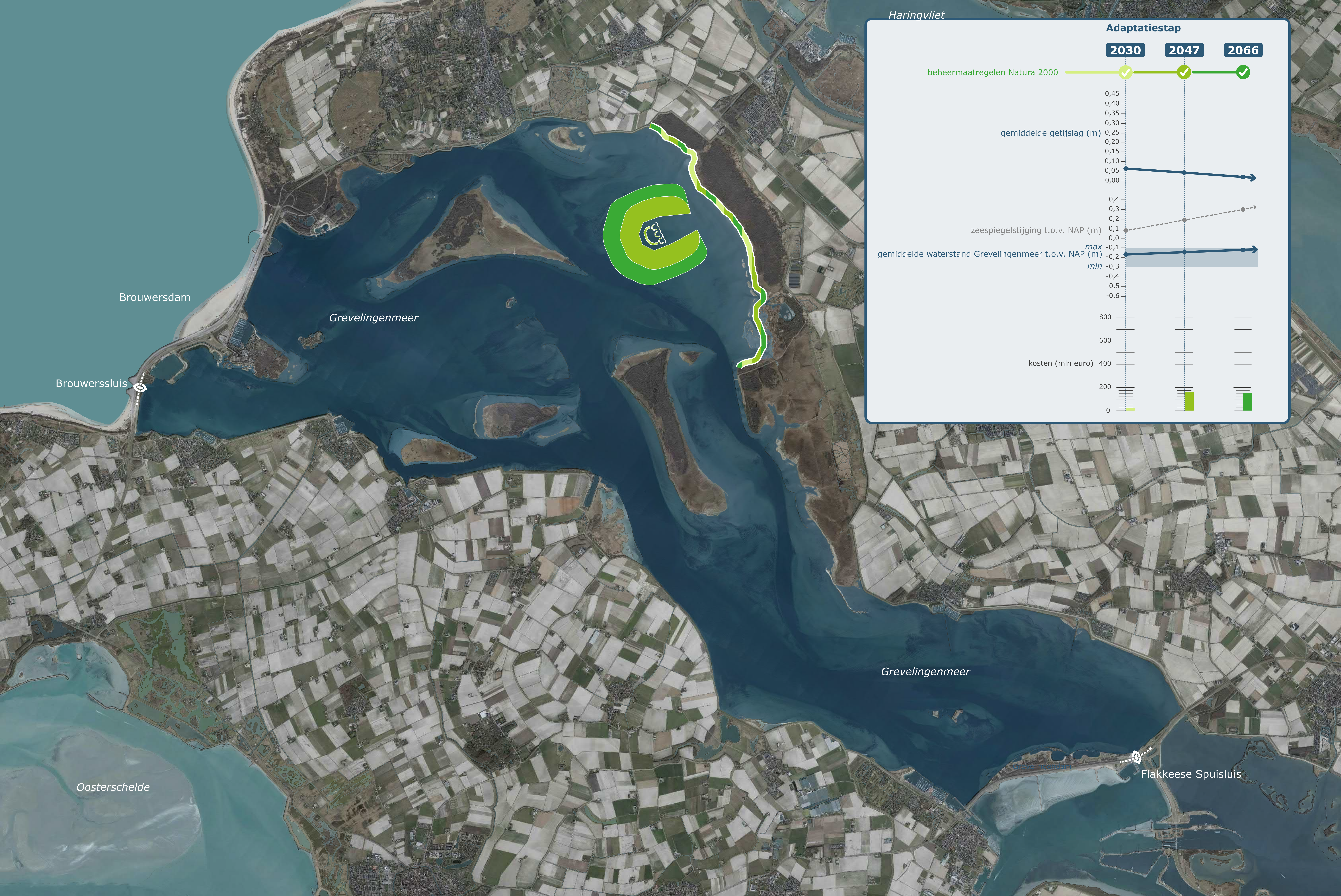
Flakkeese Spuisluis

Oosterschelde

A1: Autonome ontwikkeling



Versie 2022.12.12.1

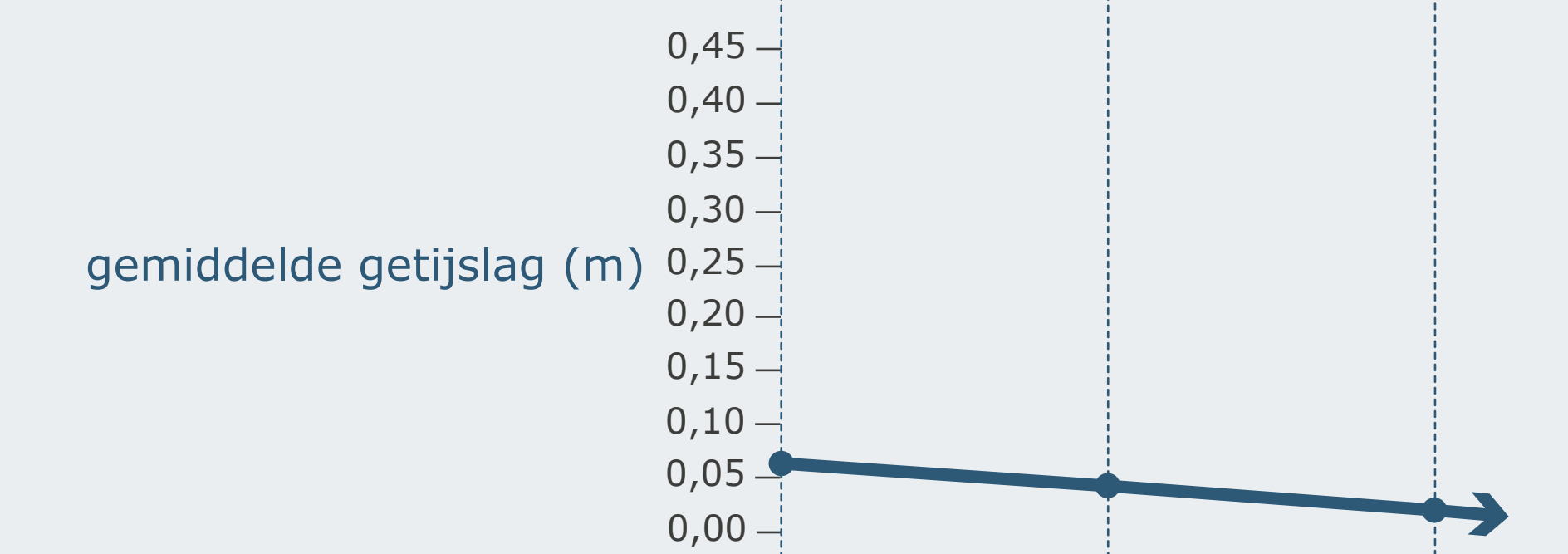


Haringvliet

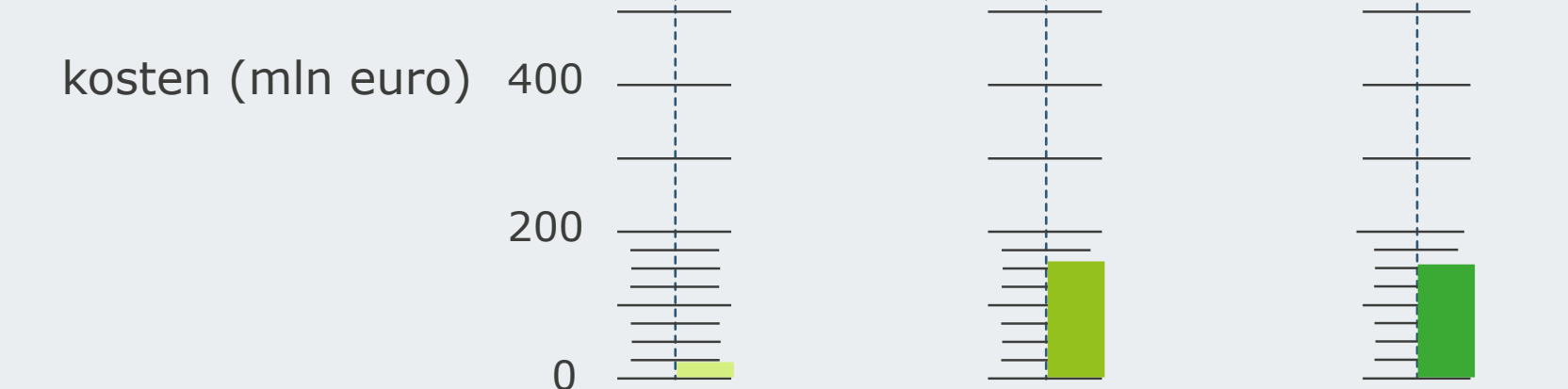
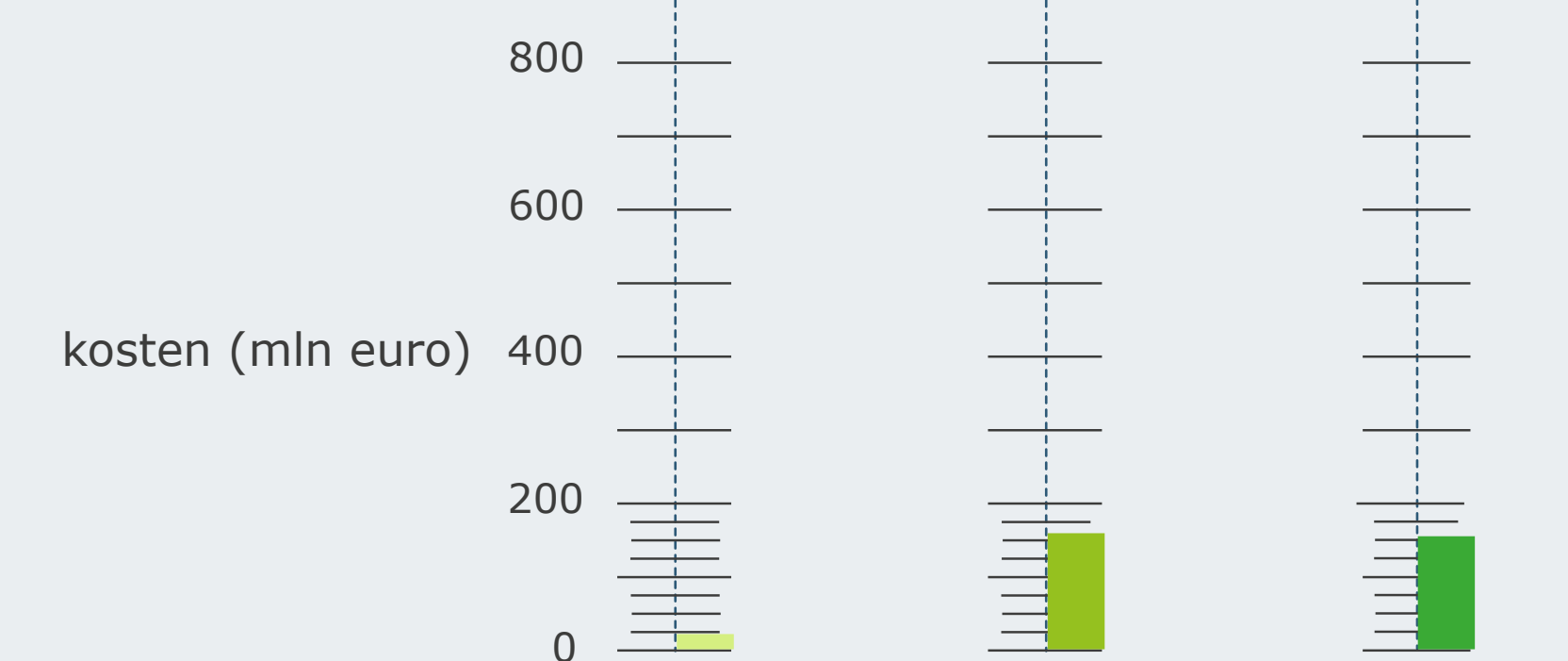
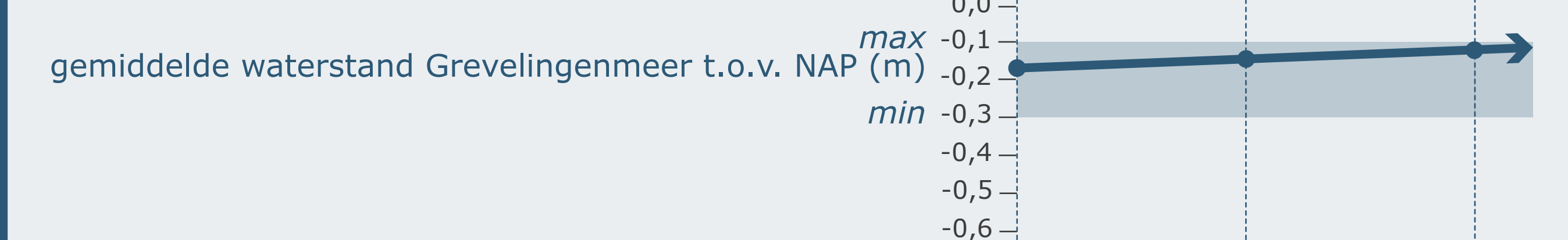
Adaptatiestap

2030 2047 2066

beheermaatregelen Natura 2000 ✓ ✓ ✓



zeespiegelstijging t.o.v. NAP (m)



A1: Autonome ontwikkeling



Haringvliet

Adaptatiestap

2030

2047

2066

- beheermaatregelen Natura 2000 ✓
- natuurmaatregelen ✓
- maatregelen infrastructuur ✓

gemiddelde getijslag (m)
 met adaptatie 0,30
 zonder adaptatie 0,25

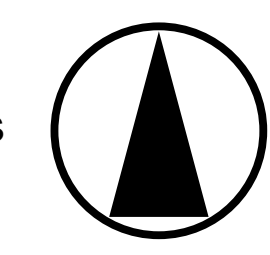
zeespiegelstijging t.o.v. NAP (m)
 max 0,1
 min -0,1

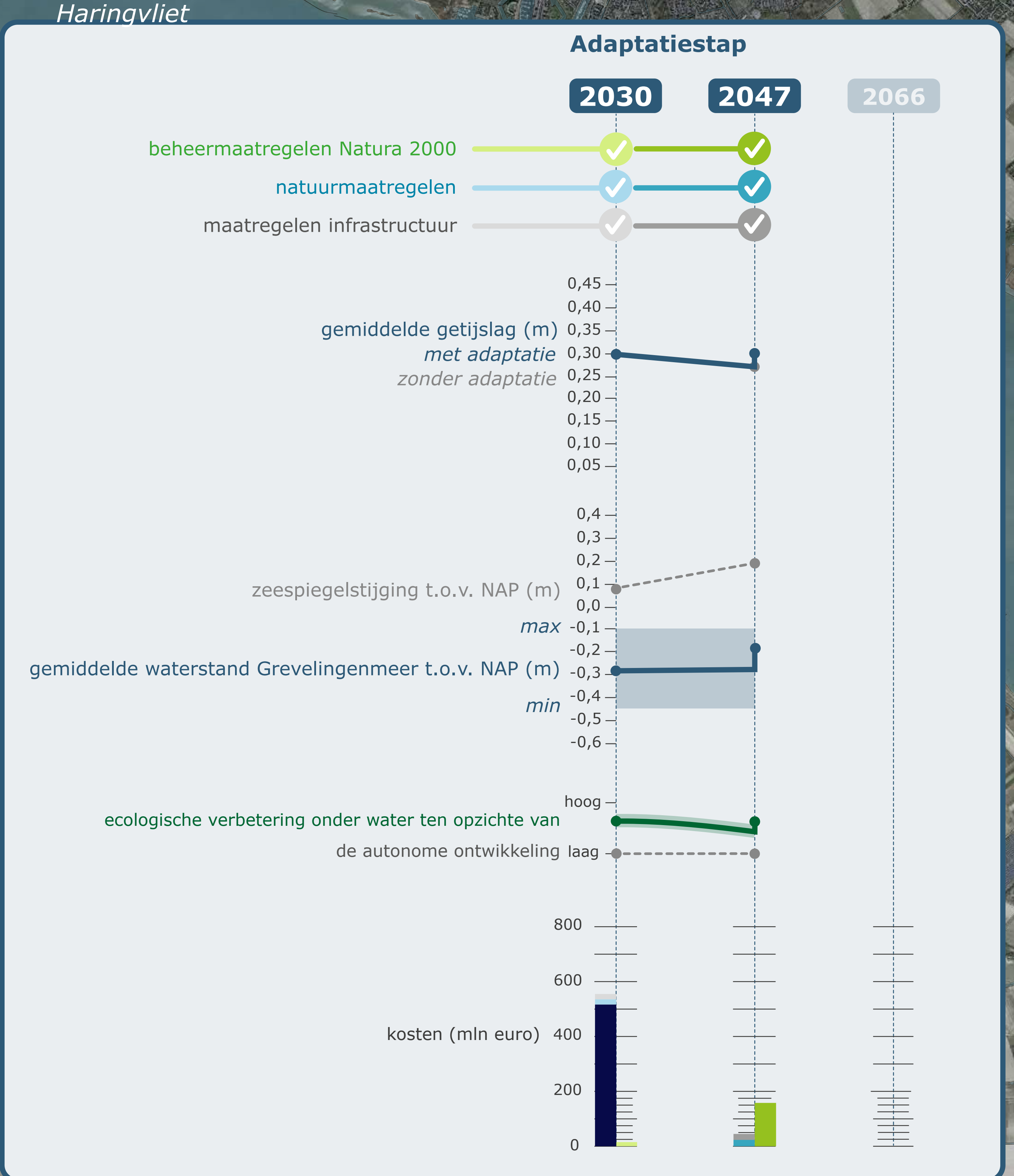
gemiddelde waterstand Grevelingenmeer t.o.v. NAP (m)
 max -0,3
 min -0,4

ecologische verbetering onder water ten opzichte van
 de autonome ontwikkeling
 hoog
 laag

kosten (mln euro)

B2: met doorlaatmiddel, getijslag 30 cm





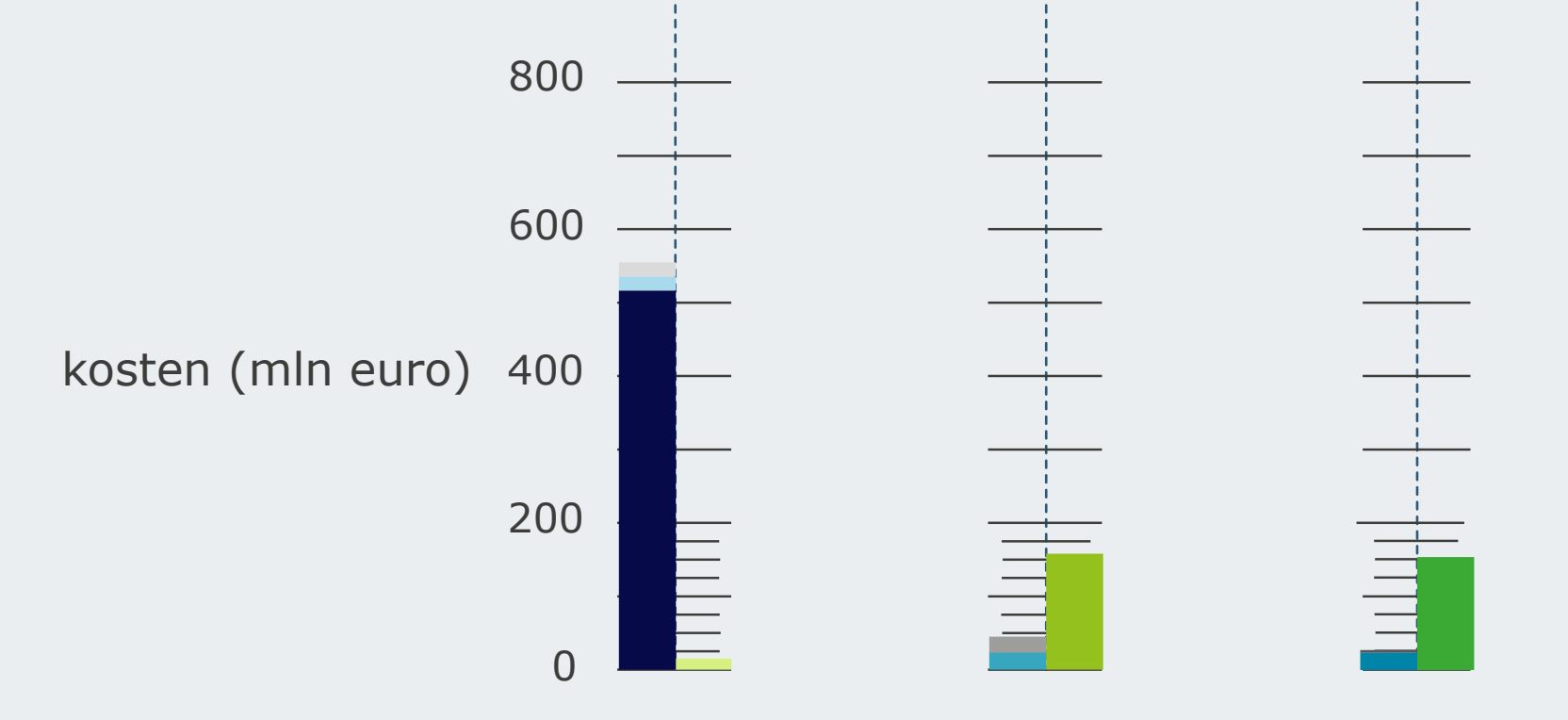
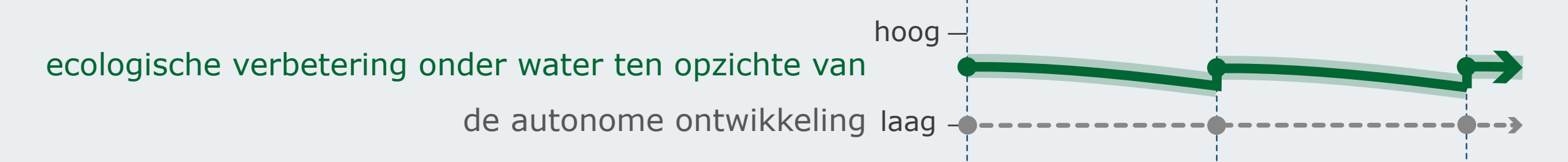
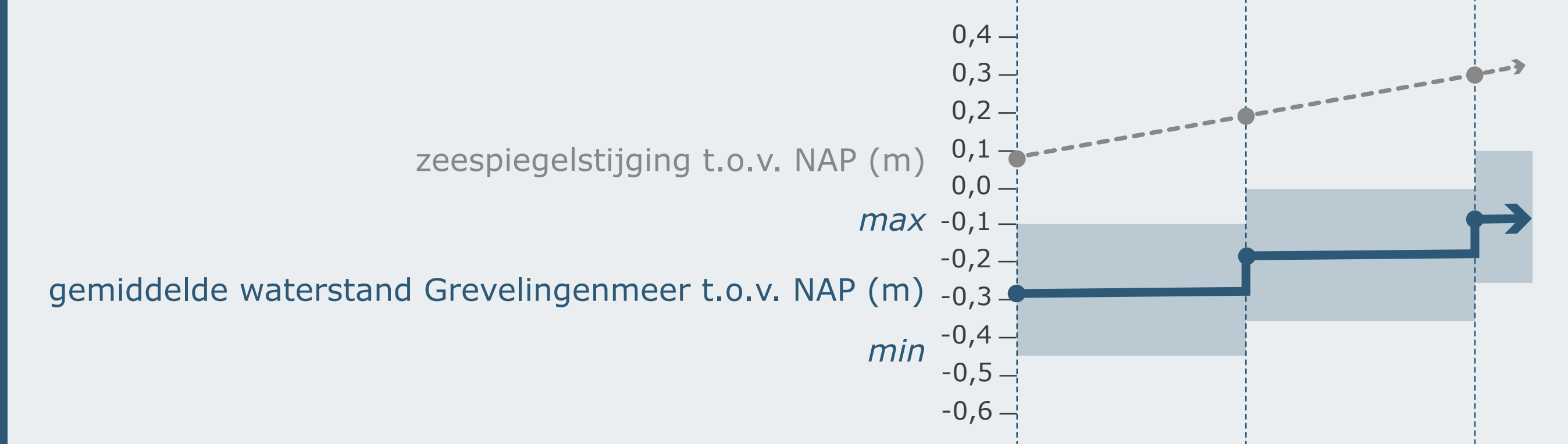
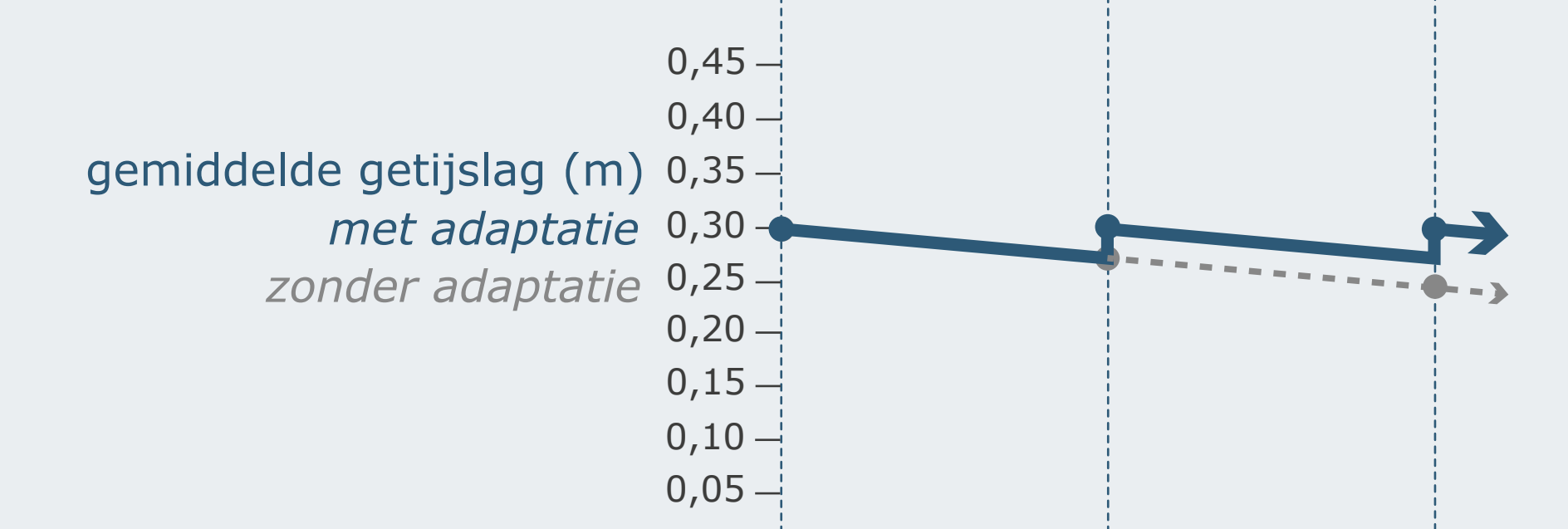
B2: met doorlaatmiddel, getijslag 30 cm



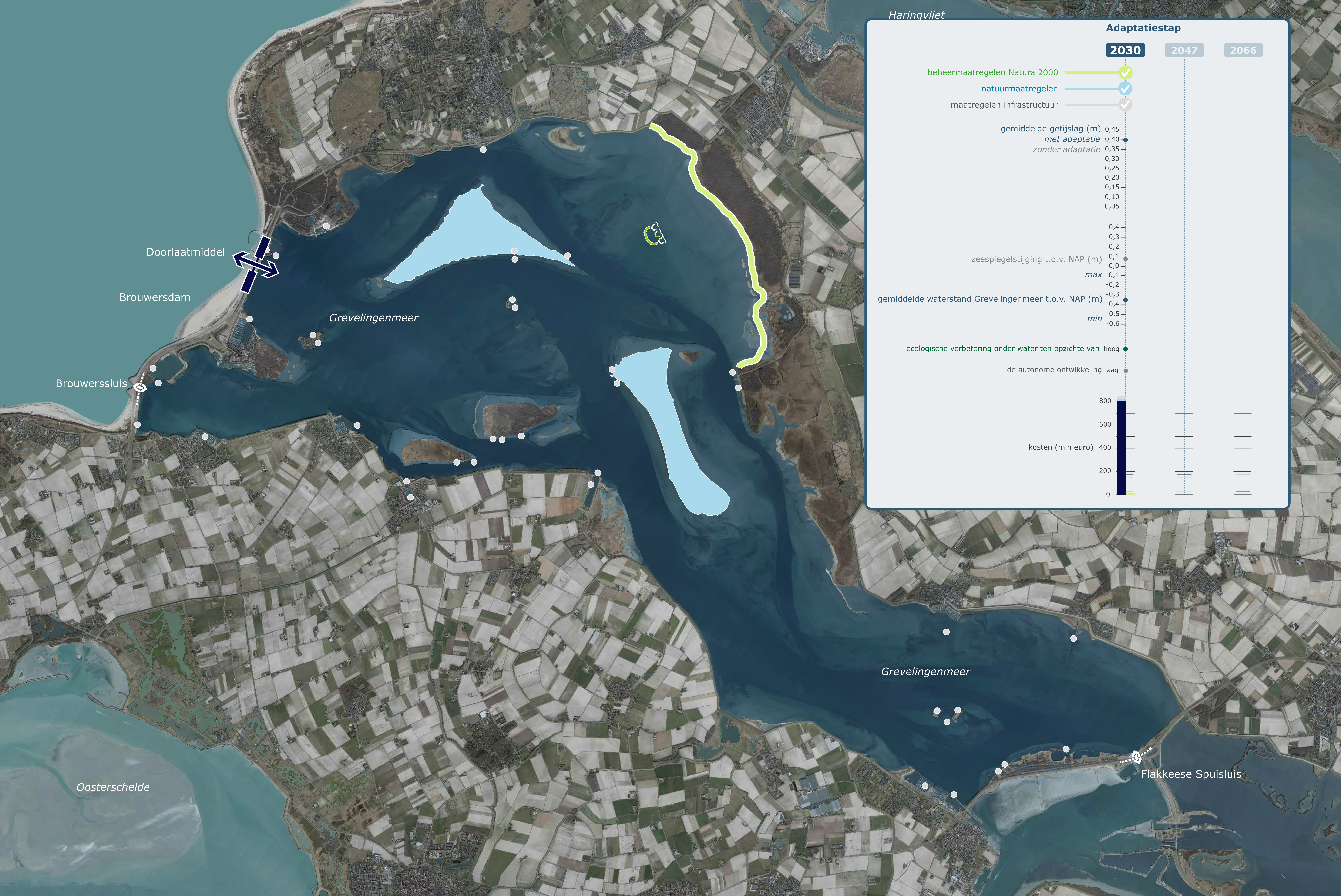
Adaptatiestap

2030 2047 2066

- beheermaatregelen Natura 2000 ✓ ✓ ✓
- natuurmaatregelen ✓ ✓ ✓
- maatregelen infrastructuur ✓ ✓ ✓



B2: met doorlaatmiddel, getijslag 30 cm



Haringvliet

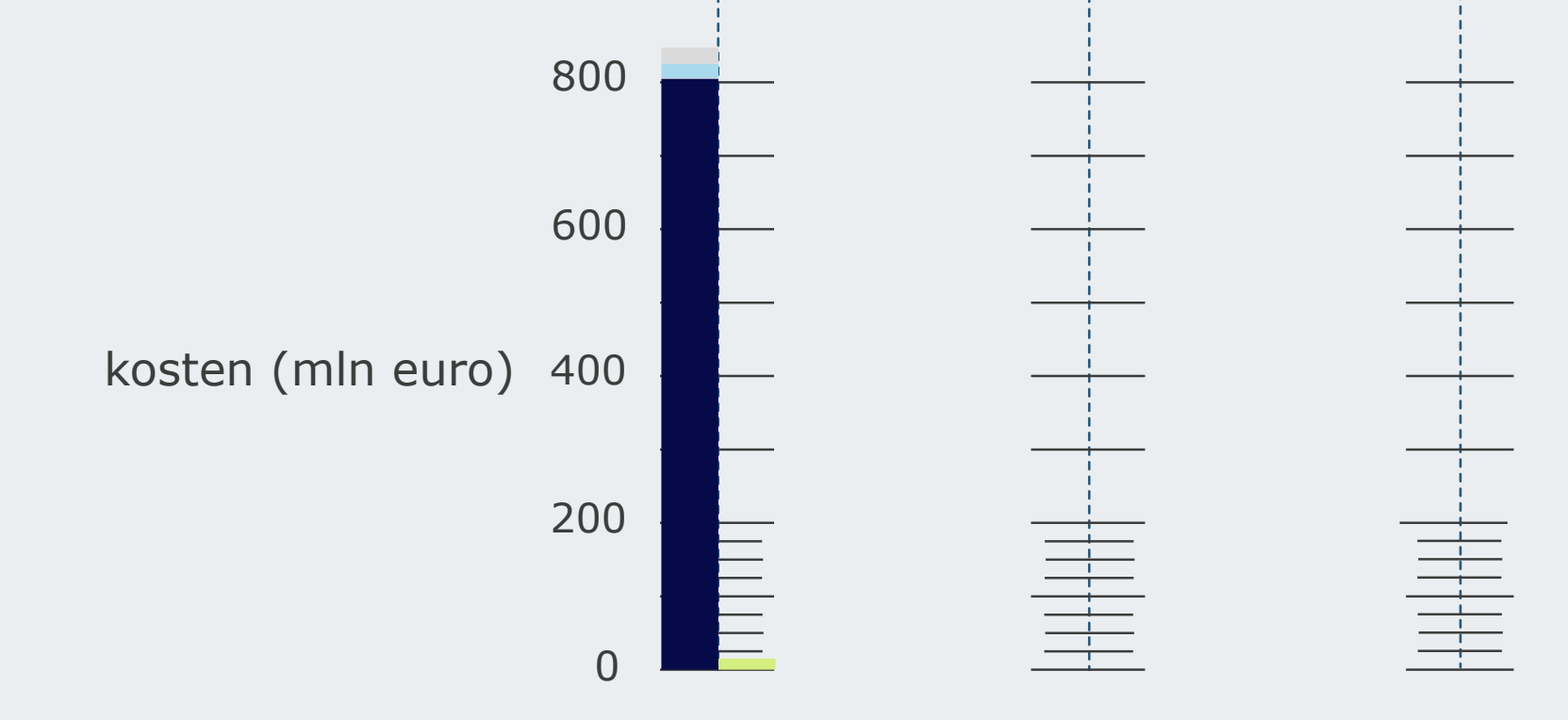
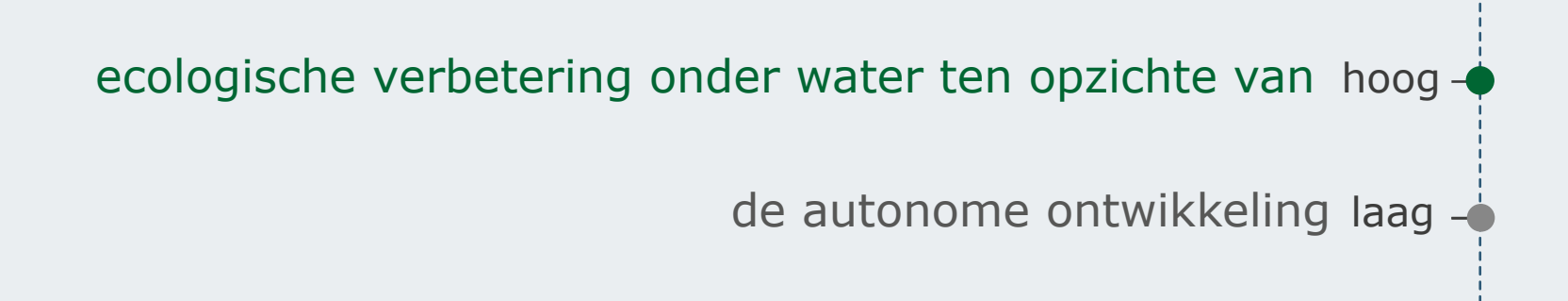
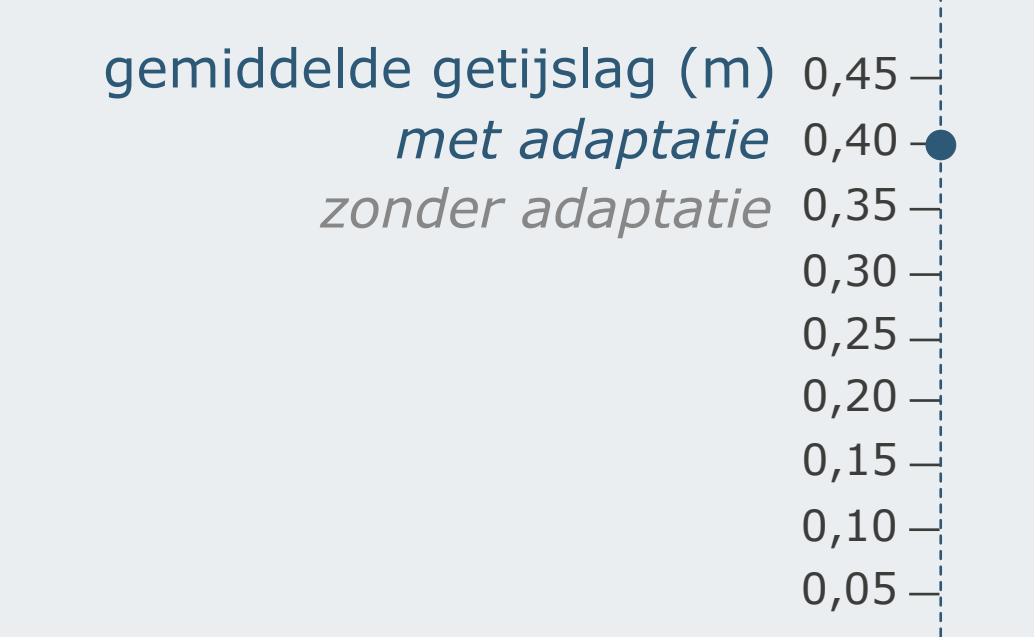
Adaptatiestap

2030

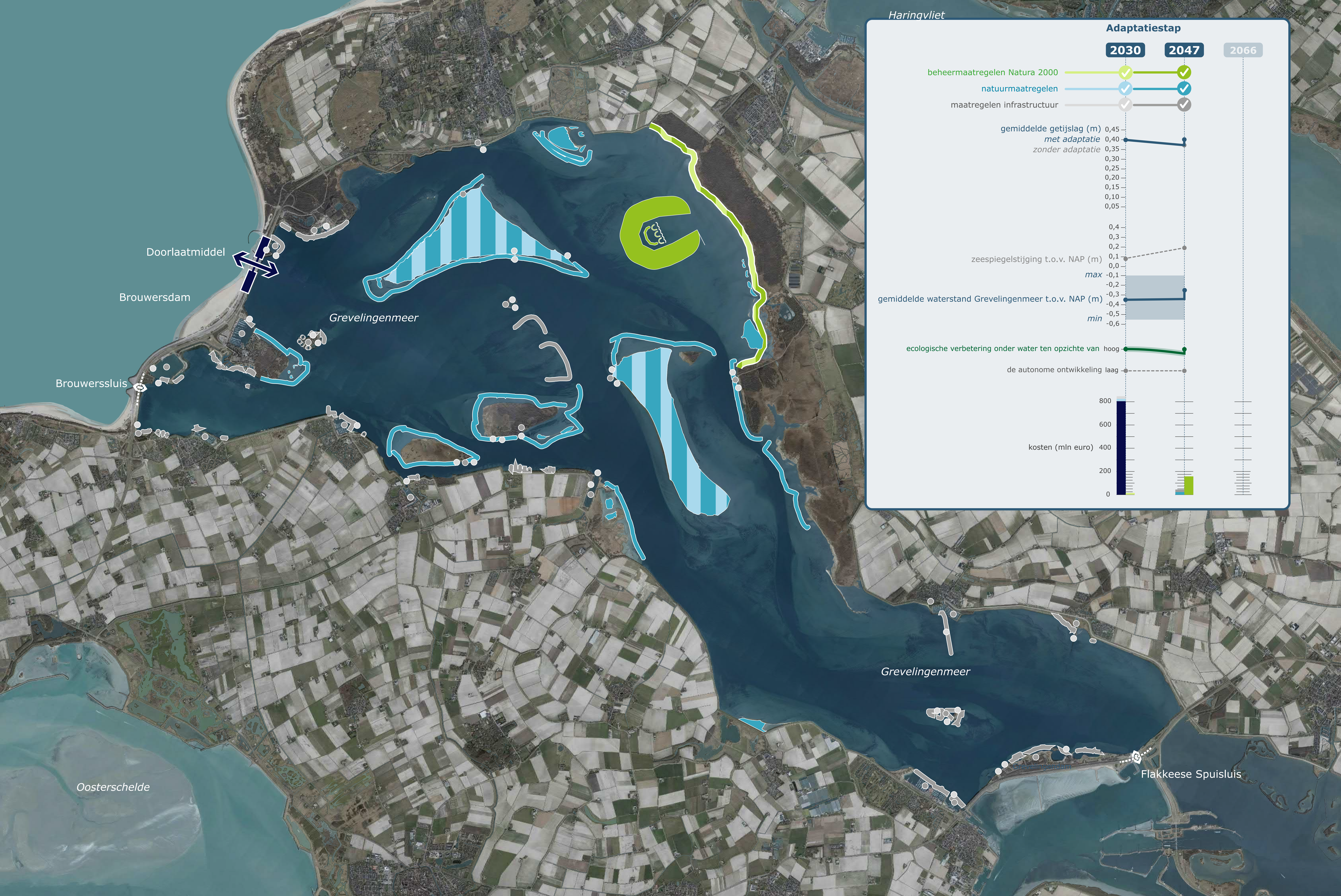
2047

2066

- beheermaatregelen Natura 2000 ✓
- natuurmaatregelen ✓
- maatregelen infrastructuur ✓



B3: met doorlaatmiddel, getijslag 40 cm



Haringvliet

Adaptatiestap

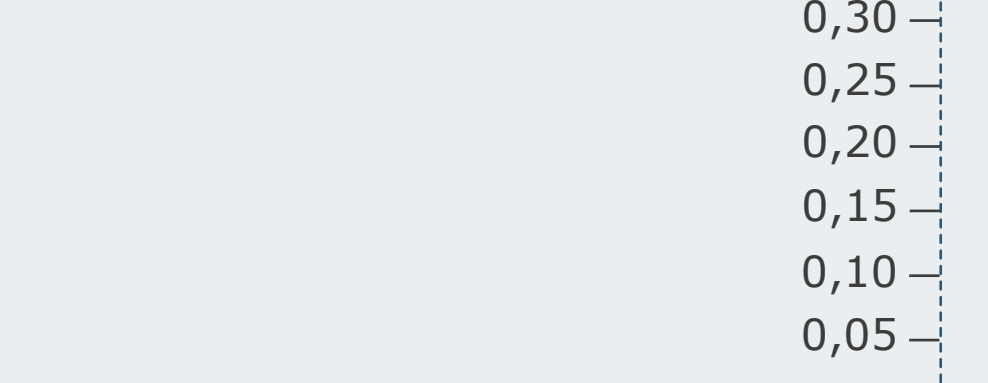
2030

2047

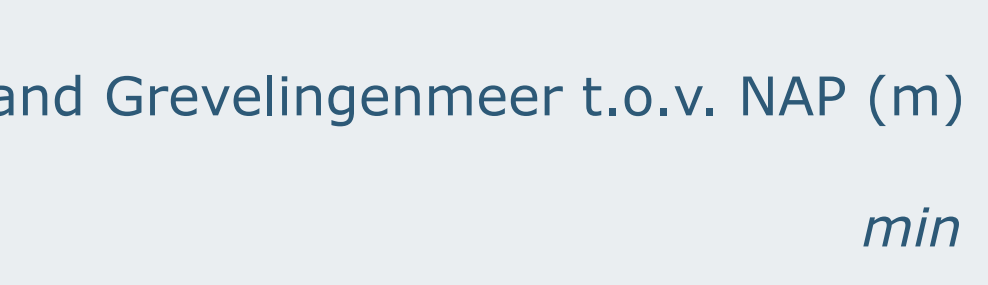
2066

- beheermaatregelen Natura 2000 ✓
- natuurmaatregelen ✓
- maatregelen infrastructuur ✓

gemiddelde getijslag (m)
met adaptatie 0,45
zonder adaptatie 0,40



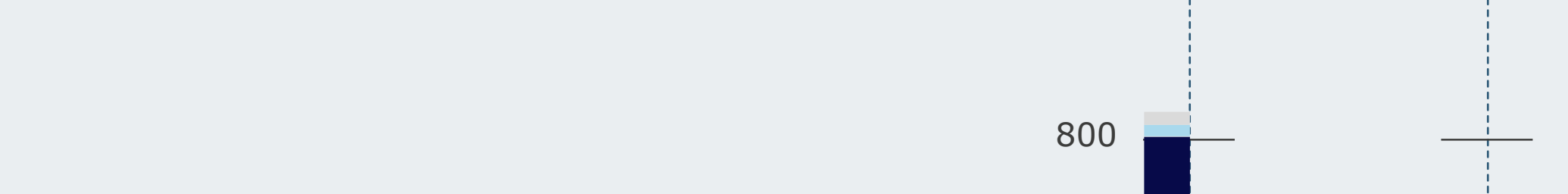
zeespiegelstijging t.o.v. NAP (m)



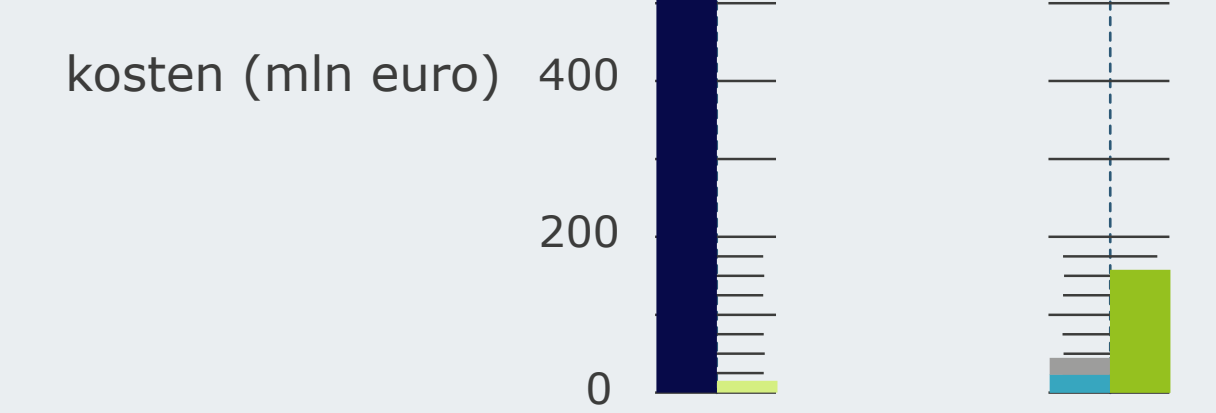
gemiddelde waterstand Grevelingenmeer t.o.v. NAP (m)



ecologische verbetering onder water ten opzichte van hoog

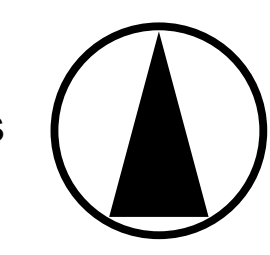


de autonome ontwikkeling laag



kosten (mln euro)

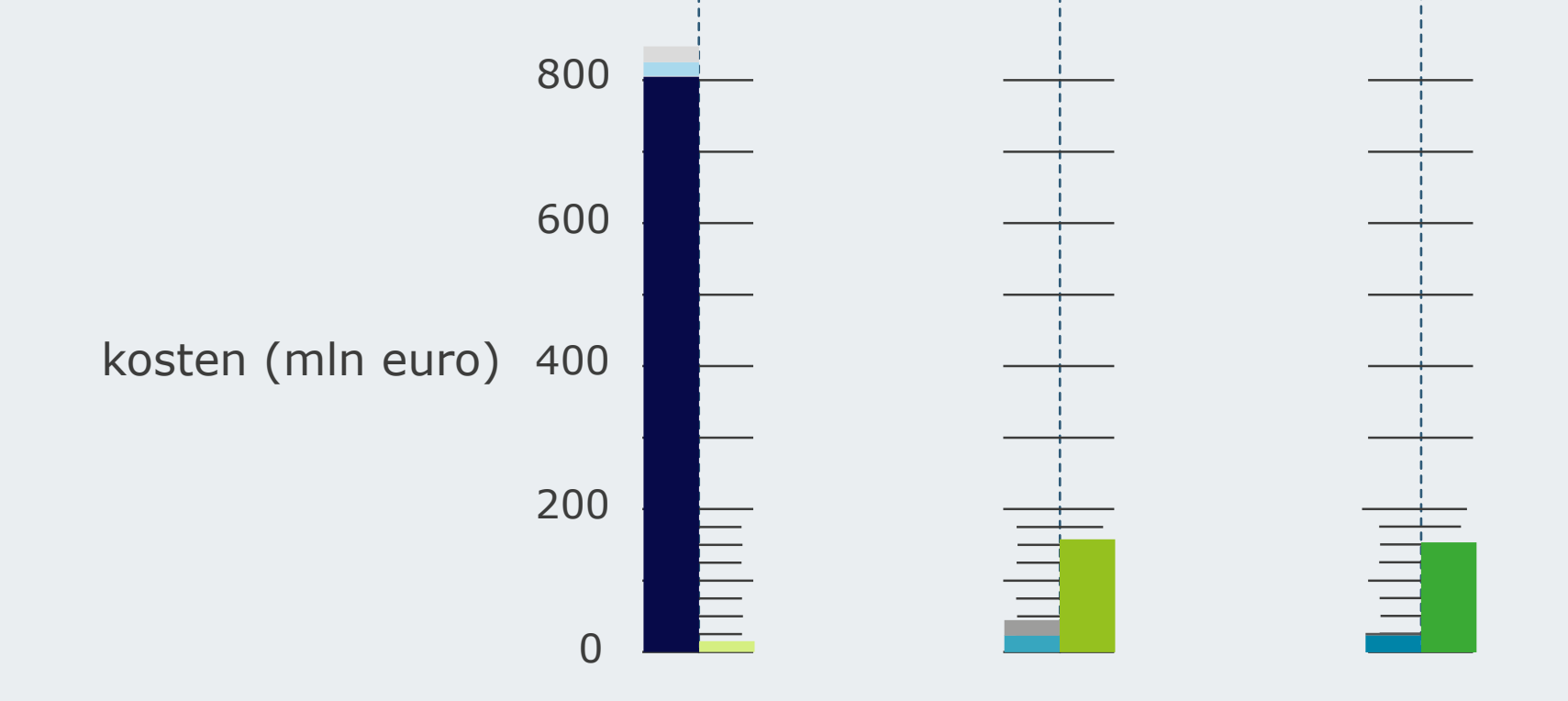
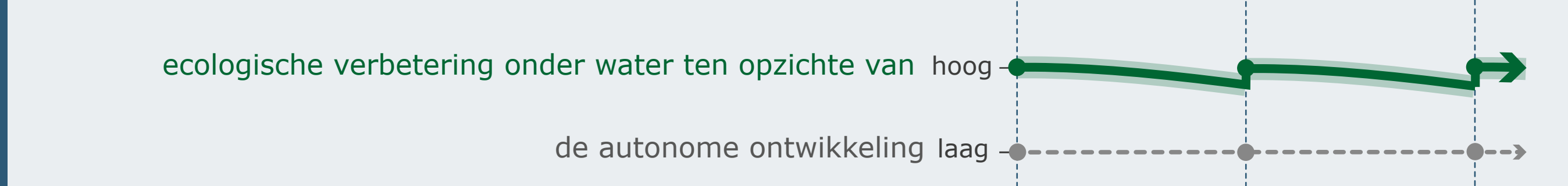
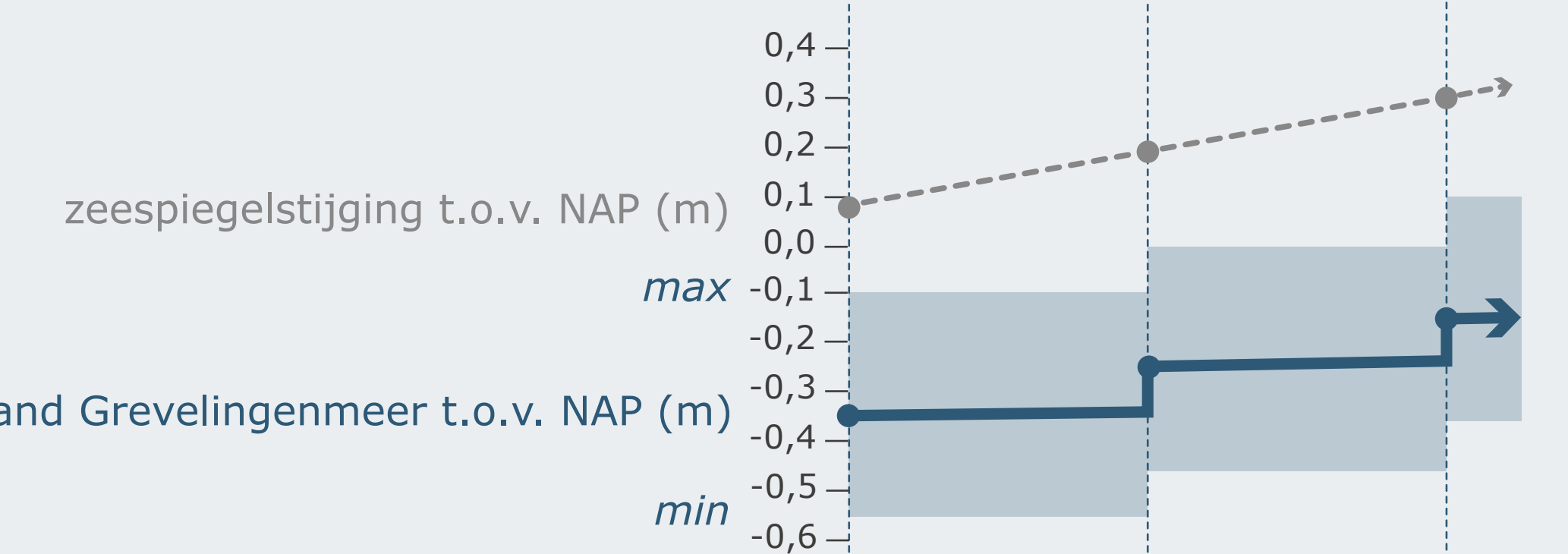
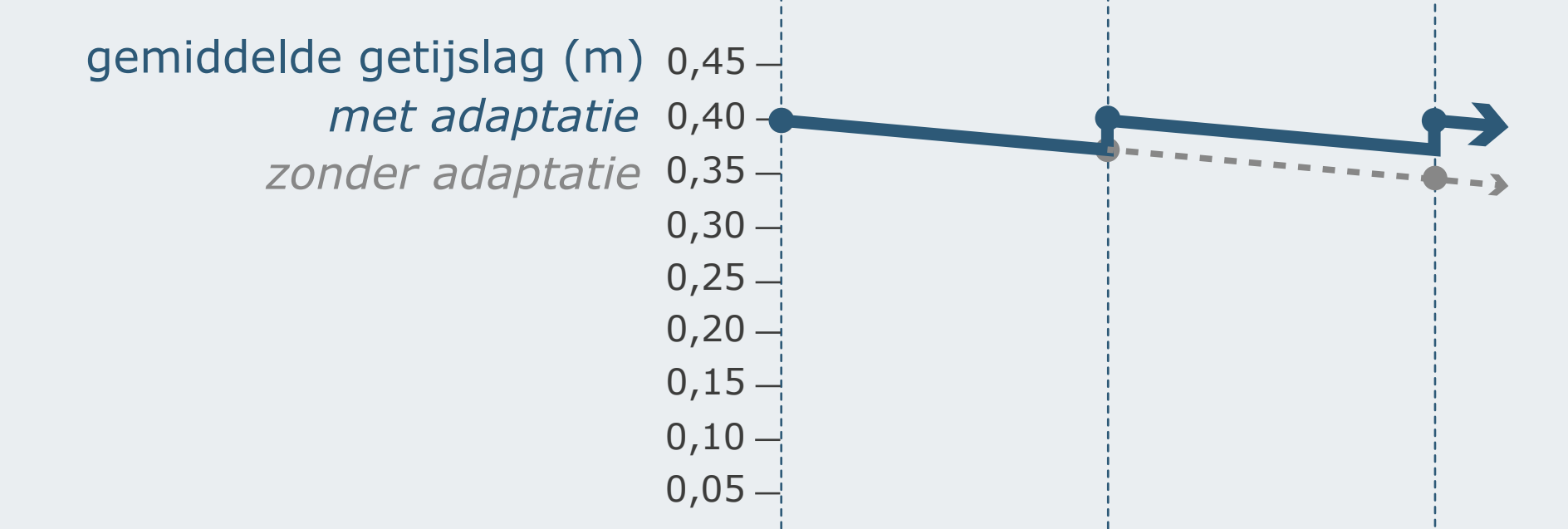
B3: met doorlaatmiddel, getijslag 40 cm



Versie 2022.12.21.1



- beheermaatregelen Natura 2000 ✓ ✓ ✓
- natuurmaatregelen ✓ ✓ ✓
- maatregelen infrastructuur ✓ ✓ ✓



B3: met doorlaatmiddel, getijslag 40 cm